

Discussion Questions: Why A Church Health Ministry?

January 9, 2019

- ▶ Which churches/communities have been the leaders in Church Health throughout history?
- ▶ Why should a church have a Church Health Ministry?
- ▶ What do you think a Church Health Ministry looks like? What are the components of a Church Health Ministry?
- ▶ What are the barriers to a thriving Church Health Ministry?



Why A Church Health Ministry?

Presented by Jennifer Martinsen BBA, MSE, MCHES

Lecturer, Robbins College of Health & Human Sciences
HHRP and Public Health Departments



Discussion Question #1

Which churches/communities have been the leaders in Church Health throughout history?

Effective Christian leaders are committed to advancing the mission in ways that also enable others to make their Kingdom contribution.



Leaders in Church Health: Faith Community/Parish Nurses

- ▶ The specialty of parish nursing was begun by Dr. Granger Westberg in 1984.
- ▶ Dr. Westberg was the Director of Chaplaincy at Lutheran General Hospital, in Park Ridge IL.
- ▶ Westberg's desire was to develop a relationship between health care institutions and religious congregations.
- ▶ "He believed that if nurses were available to congregants, they would be able to attend to and care for the early issues of disease and disability and foster a health promotion/disease prevention approach."
- ▶ The primary purpose of faith community nursing is to provide holistic care to parishioners.
- ▶ Parish, (or faith community) nurses work at faith communities of every denomination (churches, synagogues, temples, mosques, etc.).

Leaders in Church Health: African American Churches

- ▶ “African American churches strive to attend to the spiritual, mental, and physical needs of their members. In working for the advancement of the community in all avenues of life, African American pastors have led the charge serving as teacher, politician, preacher, and as an agent of health-related change.”

▶ *Levin JS. The role of the black church in community medicine. Journal of the National Medical Association.*

Discussion Question #2

Why should a church have a Church Health Ministry?



Based on the belief that Healing is an integral part of the ministry of every church.

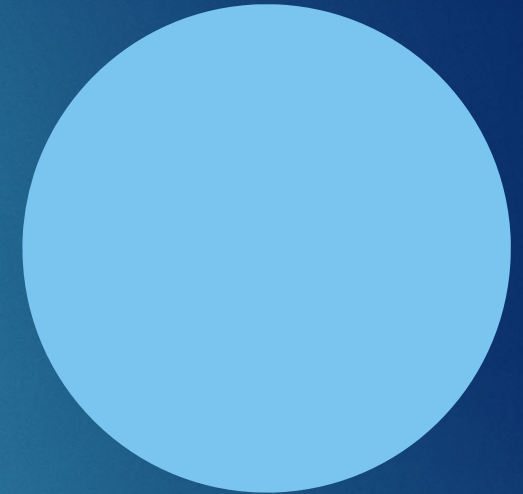
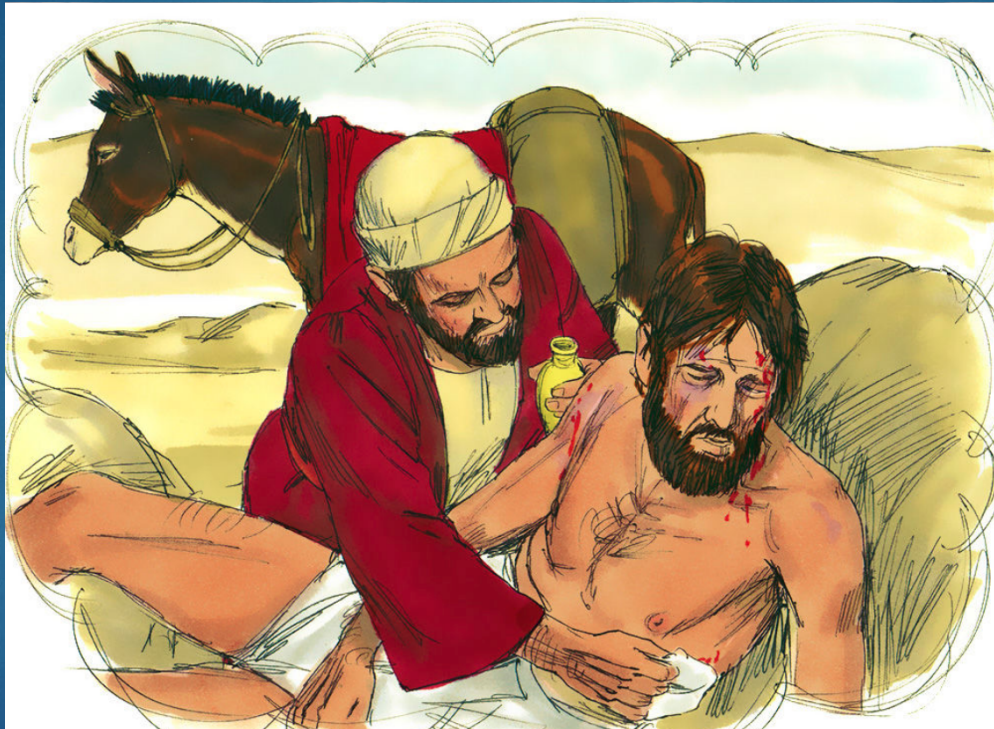
- ▶ Luke 10:9 Heal the sick who are there and tell them, 'The kingdom of God has come near to you.'



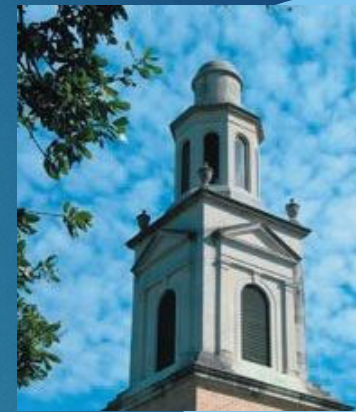
Because caring for people's health has been a part of the mission of the church throughout its 20 centuries of existence (except for the last 100 years).

- ▶ Jesus' teachings and ministry practiced it.
- ▶ The New Testament Church practiced it.
- ▶ The church in the middle ages was the only one concerned about health.
- ▶ Churches led the way in modern times in establishing hospitals and medical clinics.

The Good Samaritan- “Go and do likewise.”



Churches in the middle of every community



Are we Equipped for the Call?

- ▶ Research shows that when people are hurting and in a health crisis, be it spiritual, physical, mental or emotional, the first place they seek help is their place of faith.



FAITH
IN A TIME OF
CRISIS

Discussion Question #3



- ▶ What do you think a Church Health Ministry looks like?
- ▶ What are the components of a Church Health Ministry?

What Does a Church Health Ministry Look Like?

- ▶ A church designs its own health ministry to meet the needs of its members and community.
- ▶ Each church health ministry is unique



Health Care Support/Referrals from Case Management:

- ▶ Establish Primary Care Provider
- ▶ Transportation to Medical Appointment
- ▶ Food/Meal Assistance
- ▶ Caregiving/Home Visits
- ▶ Social/Emotional/Spiritual Care
- ▶ Encouragement to seek medical care
- ▶ Appointment Reminders
- ▶ Health & Disease Management Education
- ▶ Medication Issues: Financial Assistance and/or Education
- ▶ Prescription drop-off/pick-up
- ▶ Help completing forms for service

For _____ Date _____
Address _____

Rx

LABEL Yes No

PHARMACY USE ONLY
PHARMACY USE ONLY

Dr. _____ Dr. _____
Substitution Permitted _____ Dispense as Written _____

DEA No. _____
Reorder: PHARMAX SB-1

Assessments/Screenings/Class Offerings:

- ▶ Health Assessments (Mind, Body & Spirit)
- ▶ Health Screenings
- ▶ Exercise Classes (Walking Clubs, Zumba, Tone, Weight Training, etc.)
- ▶ Nutrition Education (Healthy Eating, Weight Loss, etc.)
- ▶ Disease Management (Diabetes, Hypertension, Arthritis, Women's Issues, etc.)
- ▶ Mental Health Awareness (Depression, Grief, Suicide Prevention, Support Groups, etc.)



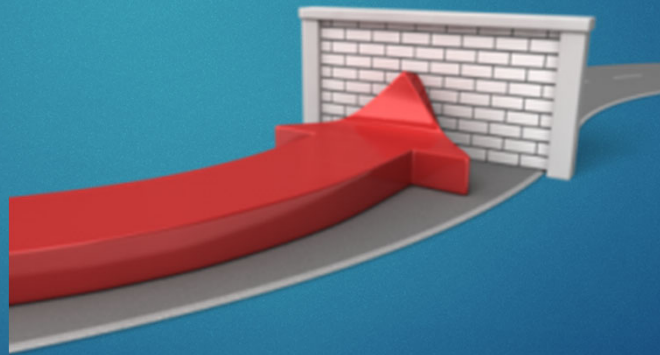
Referral Services:

- ▶ Social Worker/Health Educator for the church and its community to refer to community resources and health care entities.
- ▶ Coordination of volunteers and collaboration with other church ministries



Discussion Question #4

- ▶ What are the barriers to a thriving Church Health Ministry?



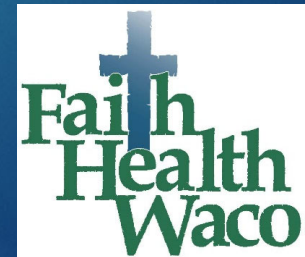
Barriers to a thriving Church Health Ministry:

- ▶ Church Health Ministry not being part of the mission/overall strategy of the church
- ▶ Lack of volunteers/planning
- ▶ Lack of Financial Resources
- ▶ Electronic Communication/Computer Access
- ▶ Lack of Confidentiality
- ▶ Judgment /Blame
- ▶ Promising healing to the body if one has “enough” faith
- ▶ Lack of partnership with other churches and community organizations

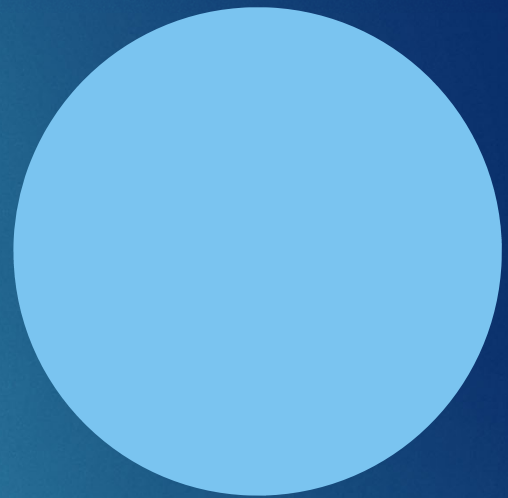
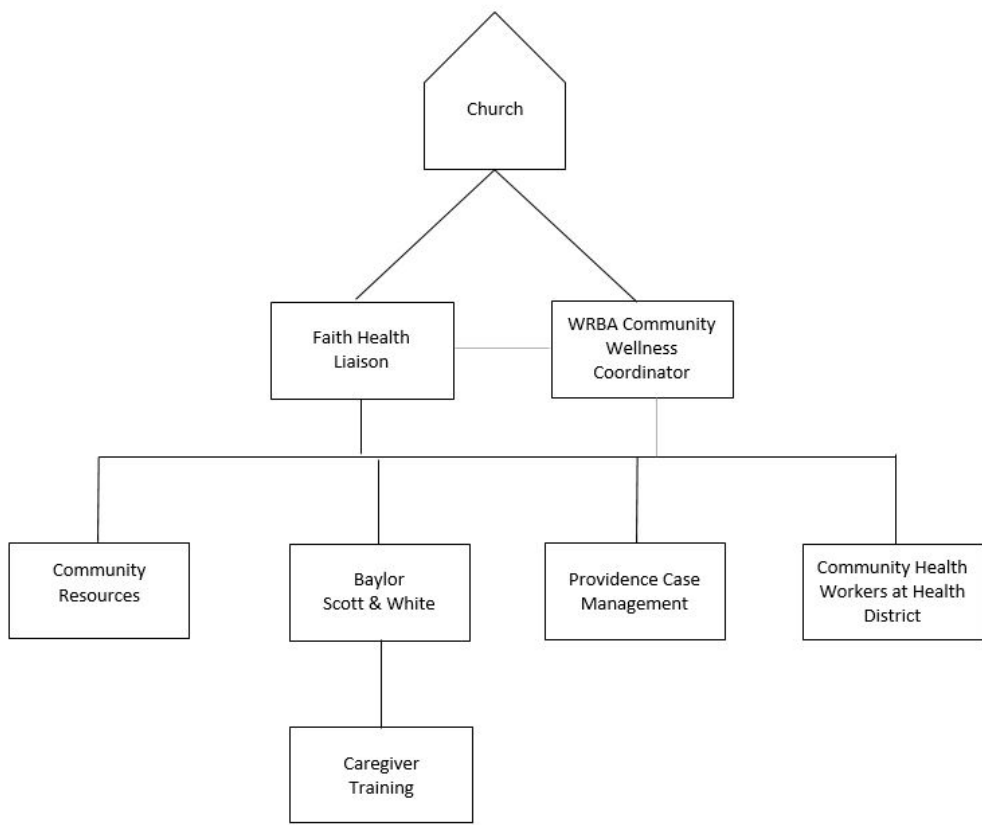
Faith Health Waco Pilot Program

“A partnership of faith and health”

- ▶ Goal: facilitating a partnership between churches/faith communities and hospitals, clinics and the health district to provide a network of support to improve the health of the Waco community.
- ▶ Method: by partnering with the city's churches to assist them in starting or growing their own Church Health Ministry. This Church Health Ministry will support the wellness of both church members as well as community members. FHW is the “connector” between churches and healthcare partners.



FAITH HEALTH WACO CONNECTOR FLOW CHART



How it Works

- ▶ We identify and train lay people/community workers inside a faith community that are interested in health. This person acts as the *Faith Health Liaison* for their church.
- ▶ They work with the 2 distinct health care entities (Baylor Scott & White & Providence) and Community Health Workers within our county to assist church members in coordination of care.
- ▶ This group is called the **Good Samaritan Network**.



Critical Roles within the Good Samaritan Network

- ▶ Community/Congregation Member: A member of the church/faith community or a member of the church/faith community however that may be defined by the church/congregation.
- ▶ Faith Health Liaison: A church/faith community staff member or volunteer selected and supported by the church pastor/faith community leader who leads the Health Ministry within the church/congregation.



Critical Roles within the Good Samaritan Network Cont.


- ▶ Community Health Workers: An employee who is grant funded and is managed by the McLennan County Health District who is responsible for helping patients and their families to navigate and access community services, other resources, and adopt healthy behaviors.
 - ▶ Improves access to and connects referrals from targeted, under-served zip codes (76704, 76705, 76706 and 76707) with resources critical to health (food, transportation, medical assistance, Medicaid paperwork, PCP appointment)
- ▶ Faith Health Coordinator: An employee of one of our health care partners within in the Good Samaritan Network (Baylor Scott & White & Providence) who works as a Case Manager, Care Manager or Social Worker and has been given the distinction as a Faith Health Coordinator.



Negative health outcomes in our community are linked the Social Determinants of Health

Economic Stability	Neighborhood and Physical Environment	Education	Food	Community and Social Context	Health Care System
Employment	Housing	Literacy	Hunger	Social integration	Health coverage
Income	Transportation	Language	Access to healthy options	Support systems	Provider availability
Expenses	Safety	Early childhood education		Community engagement	Provider linguistic and cultural competency
Debt	Parks	Vocational training		Discrimination	Quality of care
Medical bills	Playgrounds	Higher education		Stress	
Support	Walkability				
	Zip code / geography				

Health Outcomes
 Mortality, Morbidity, Life Expectancy, Health Care Expenditures, Health Status, Functional Limitations



Faith Health Waco- Community Outreach:

- ▶ The partnership between faith and health can not only help to meet the needs of church members, but can also be an outreach and ministry to the community of people that surround the walls of a church.



In Conclusion: What Difference Does It Make?

- ▶ An elderly gentleman in our community received a ride from a church member to his medical appointment in Temple. He had no other form of transportation. He told his case manager, "I have to go, my 'church man' is here to pick me up just as he promised".
- ▶ A 27 year old man diagnosed with CHF is being picked up and taken to his CHF clinic and then returned home once a week by a Men's group in one of our churches.
- ▶ An elderly woman with no family is being taken to Caritas every week for low sodium food due to her hypertension. Now, she is being picked up to attend church.
- ▶ Pastors and FHL's calling on patients requesting "spiritual care".

The Hands & Feet of Jesus

You were Jesus to me
and you never even
knew...